

HMG-2 Rabbit pAb (AR20069)

Key Features

Host Species:	Rabbit
Reactivity:	Human, Mouse, Rat
Applications:	WB, IHC, IF, ELISA
Isotype:	IgG
MW:	27kD (Observed)

Recommended Dilution Ratios

WB:	1:500-2000
IHC:	1:100-300
IF:	1:200-1000
ELISA:	1: 10000

Not yet tested in other applications

Storage -15°C to -25°C/1 year (Do not lower than -25°C)

Basic Information

Clonality Polyclonal

Immunogen Information

Specificity HMG-2 Polyclonal Antibody detects endogenous levels of HMG-2 protein.

Target Information

Gene name HMGB2
Protein Name High mobility group protein B2

Organism	Gene ID	UniProt ID
Human	3148	P26583
Mouse	97165	P30681
Rat	29395	P52925

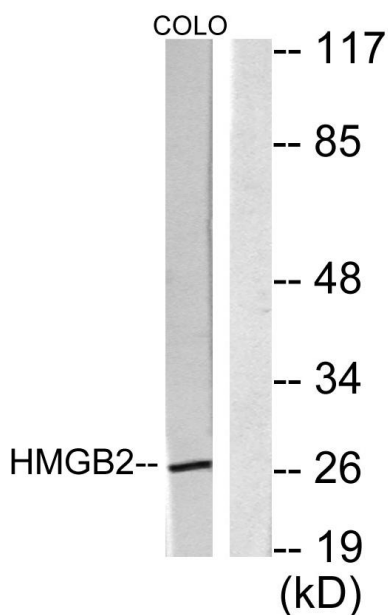
Cellular Localization Nucleus . Chromosome . Cytoplasm . Secreted . In basal state predominantly nuclear.

Tissue specificity Expressed in gastric and intestinal tissues (at protein level).

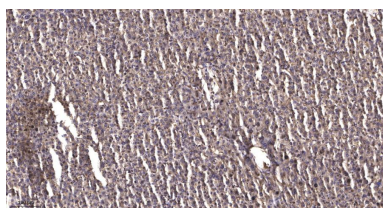
Validation Data



Western Blot analysis of various cells using HMG-2 Polyclonal Antibody



Western blot analysis of lysates from COLO205 cells, using HMGB2 Antibody. The lane on the right is blocked with the synthesized peptide.



Immunohistochemical analysis of paraffin-embedded human liver cancer. 1, Antibody was diluted at 1:200(4° overnight). 2, Tris-EDTA,pH9.0 was used for antigen retrieval. 3,Secondary antibody was diluted at 1:200(room temperature, 45min).

For Research Use Only