

KI18A Rabbit pAb (AR20003)

Key Features

Host Species:	Rabbit
Reactivity:	Human, Mouse
Applications:	WB, ELISA, IHC
Isotype:	IgG
MW:	99kD (Calculated)

Recommended Dilution Ratios

WB:	1:500-2000
IHC:	1:50-300
ELISA:	1: 2000-20000
Storage	-15°C to -25°C/1 year (Do not lower than -25°C)

Basic Information

Clonality	Polyclonal
-----------	------------

Immunogen Information

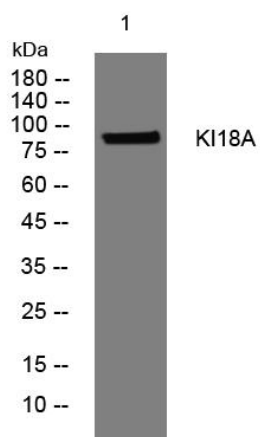
Specificity	This antibody detects endogenous levels of KI18A at Human/Mouse
-------------	---

Target Information

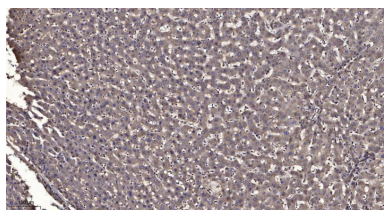
Gene name	KIF18A OK/SW-cl.108
Protein Name	KI18A

	Organism	Gene ID	UniProt ID
	Human	81930	Q8NI77
	Mouse	228421	Q91WD7
Cellular Localization	Cell projection, ruffle. Cytoplasm. Nucleus. Cytoplasm, cytoskeleton, microtubule organizing center, centrosome.		

Validation Data



Western blot analysis of lysates from VEC cells, primary antibody was diluted at 1:1000, 4° over night



Immunohistochemical analysis of paraffin-embedded human liver cancer. 1, Antibody was diluted at 1:200(4° overnight). 2, Tris-EDTA,pH9.0 was used for antigen retrieval. 3,Secondary antibody was diluted at 1:200(room temperature, 45min)

For Research Use Only