

## β Actin Rabbit mAb (AR1295)

### Key Features

Host Species:	Rabbit
Reactivity:	Human, Mouse, Rat
Applications:	WB, IHC, IF, ELISA
Isotype:	IgG, Kappa
MW:	42kD (Calculated) 42kD (Observed)

### Recommended Dilution Ratios

IHC:	1:2000-20000
WB:	1:2000-10000
IF:	1:200-1000
ELISA:	1:5000-20000

### Storage

-15°C to -25°C/1 year (Do not lower than -25°C)

### Basic Information

Clonality	Monoclonal
-----------	------------

### Immunogen Information

Specificity	Endogenous
-------------	------------

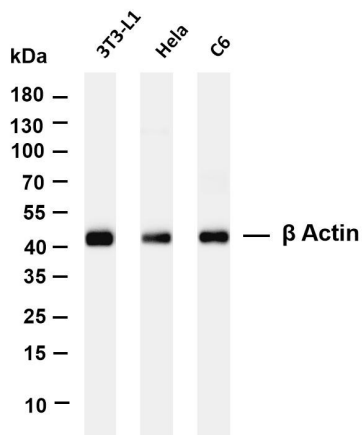
### Target Information

Gene name	ACTB
Protein Name	Actin cytoplasmic 1

Organism	Gene ID	UniProt ID
Human	60	P60709
Mouse	11461	P60710
Rat	81822	P60711

Cellular Localization	Cytoplasm
Tissue specificity	B-cell lymphoma, Brain, Cajal-Retzius cell, Eye, Fetal brain cortex, Foreskin, Hepatocellular carcinoma

### Validation Data



Various whole cell lysates were separated by 4-20% SDS-PAGE, and the membrane was blotted with anti- $\beta$  Actin antibody. The HRP-conjugated Goat anti-Rabbit IgG(H + L) antibody was used to detect the antibody.

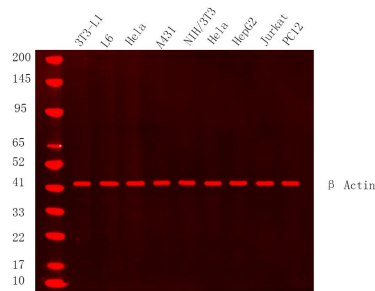
Lane 1: 3T3-L1

Lane 2: HeLa

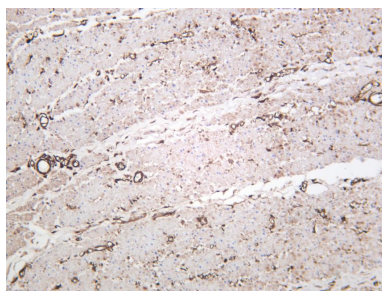
Lane 3: C6

Predicted band size: 42kDa

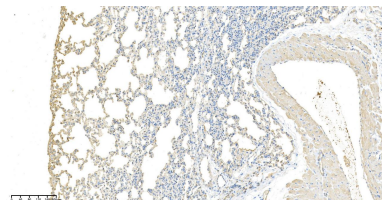
Observed band size: 42kDa



Western Blot analysis using Various whole cell lysates were separated by 4-20% SDS-PAGE, and the membrane was blotted with anti- $\beta$  Actin Rabbit mAb diluted at 1:20000. Secondary: Dylight 800, Goat Anti Rabbit IgG(1:10000)



Human colon was stained with anti- $\beta$  Actin rabbit antibody



Rat lung was stained with anti- $\beta$  Actin Rabbit antibody

For Research Use Only