

FoxO3a Rabbit pAb (AR20067)

Key Features

Host Species:	Rabbit
Reactivity:	Human, Mouse, Rat
Applications:	WB, IHC, IF, ELISA
Isotype:	IgG
MW:	71kDa (Calculated) 75kDa (Observed)

Recommended Dilution Ratios

WB:	1:500-2000
IHC:	1:100-300
IF:	1:200-1000
ELISA:	1:20000
Storage	-15°C to -25°C/1 year (Do not lower than -25°C)

Basic Information

Clonality	Polyclonal
-----------	------------

Immunogen Information

Specificity	FoxO3a Polyclonal Antibody detects endogenous levels of FoxO3A protein.
-------------	---

Target Information

Gene name	FOXO3
Protein Name	Forkhead box protein O3

Organism	Gene ID	UniProt ID
Human	2309	O43524
Mouse	56484	Q9WVH4

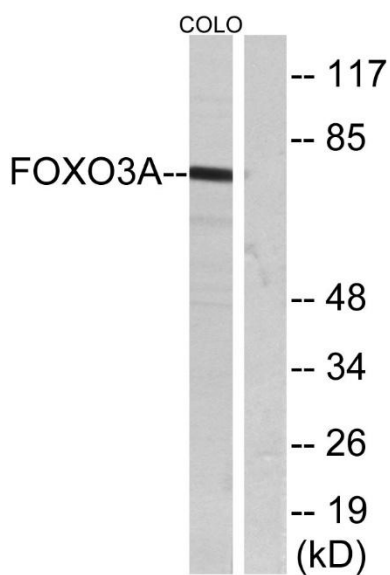
Cellular Localization	Cytoplasm, cytosol. Nucleus. Mitochondrion matrix. Mitochondrion outer membrane; Peripheral membrane protein; Cytoplasmic side. Retention in the cytoplasm contributes to its inactivation (PubMed:10102273, PubMed:15084260, PubMed:16751106). Translocates to the nucleus upon oxidative stress and in the absence
-----------------------	--

of survival factors (PubMed:10102273, PubMed:16751106). Translocates from the cytosol to the nucleus following dephosphorylation in response to autophagy-inducing stimuli (By similarity). Translocates in an AMPK-dependent manner into the mitochondrion in response to metabolic stress (PubMed:23283301, PubMed:29445193). Serum deprivation increases localization to the nucleus, leading to activate expression of SOX9 and subsequent chondrogenesis (By similarity).

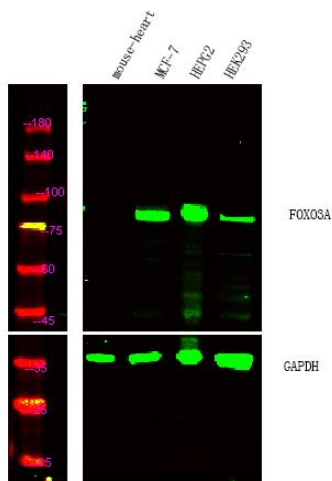
Tissue specificity

Ubiquitous.

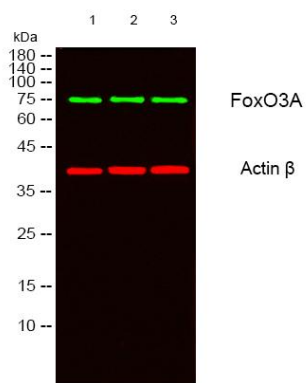
Validation Data



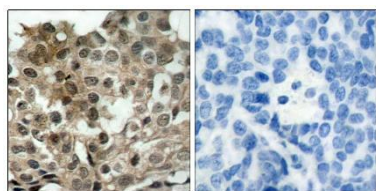
Western blot analysis of lysates from COLO205 cells, treated with serum, using FKHL1 Antibody. The lane on the right is blocked with the synthesized peptide.



Western Blot analysis of Mouse-heart (negative control), MCF7, HepG2, HEK293 cell lysis using FoxO3A Polyclonal Antibody. Dylight 800, Goat Anti Rabbit IgG Secondary antibody was diluted at 1:10000.



Western blot analysis of lysates from 1)MCF-7, 2)COLO205, 3) HELA cells, (Green) primary antibody was diluted at 1:1000, 4°C overnight, secondary antibody was diluted at 1:10000, 37°C 1hour. (Red) Actin β Monoclonal Antibody was diluted at 1:5000 as loading control, 4°C overnight, secondary antibody was diluted at 1:10000, 37°C 1hour.



Immunohistochemistry analysis of paraffin-embedded human breast carcinoma tissue, using FKHRL1 Antibody. The picture on the right is blocked with the synthesized peptide.

For Research Use Only