

## TEF Rabbit pAb (AR20066)

### Key Features

Host Species:	Rabbit
Reactivity:	Human,Mouse,Rat
Applications:	WB,IHC,IF,ELISA
Isotype:	IgG
MW:	33kDa (Calculated) 33-55kDa (Observed)

### Recommended Dilution Ratios

WB:	1:500-2000
IHC:	1:100-300
IF:	1:50-200
ELISA:	1: 10000
Storage	-15°C to -25°C/1 year (Do not lower than -25°C)

### Basic Information

Clonality	Polyclonal
-----------	------------

### Immunogen Information

Specificity	TEF Polyclonal Antibody detects endogenous levels of TEF protein.
-------------	---

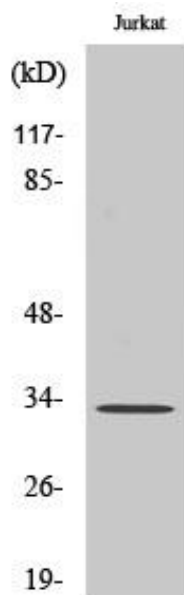
### Target Information

Gene name	TEF
Protein Name	Thyrotroph embryonic factor

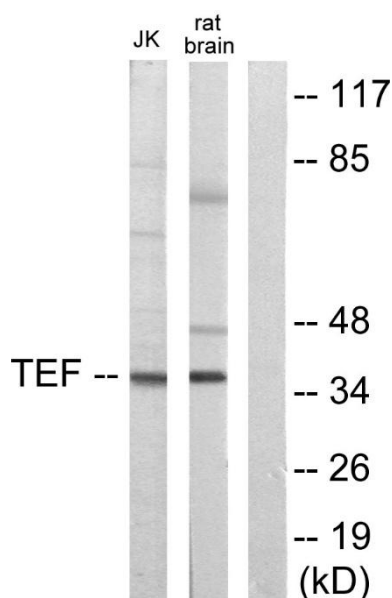
Organism	Gene ID	UniProt ID
Human	7008	Q10587
Mouse	21685	Q9JLC6
Rat	29362	P41224

Cellular Localization	Nucleus.
Tissue specificity	Brain, Kidney, Retina

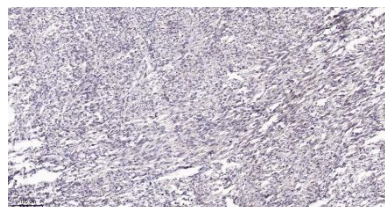
## Validation Data



Western Blot analysis of various cells using TEF Polyclonal Antibody. Cell's nucleus extracted by Minute TM Cytoplasmic and Nuclear Fractionation kit.



Western blot analysis of lysates from Jurkat and rat brain cells, using TEF Antibody. The lane on the right is blocked with the synthesized peptide.



Immunohistochemical analysis of paraffin-embedded human Small intestinal stromal tumor.

1. Tris-EDTA, pH9.0 was used for antigen retrieval.
2. Antibody was diluted at 1:200(4°C overnight.)
3. Secondary antibody was diluted at 1:200(room temperature, 45min).

For Research Use Only