

IL-1 β Mouse mAb (AM10014)

Key Features

| | |
|---------------|--|
| Host Species: | Mouse |
| Reactivity: | Human,Mouse,Rat |
| Applications: | WB,IHC,IF,ELISA |
| Isotype: | Mouse IgG1/Kappa |
| MW: | 31kD (Calculated) 35kD,31kD,20kD (Observed) |

Recommended Dilution Ratios

| | |
|--------|--------------|
| WB: | 1:2000-10000 |
| IHC: | 1:200-1000 |
| IF: | 1:100-500 |
| ELISA: | 1:1000-5000 |

Storage

-15°C to -25°C/1 year (Do not lower than -25°C)

Basic Information

| | |
|-----------|------------|
| Clonality | Monoclonal |
|-----------|------------|

Immunogen Information

| | |
|-------------|------------|
| Specificity | Endogenous |
|-------------|------------|

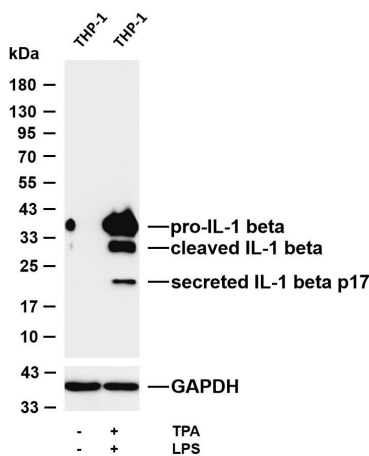
Target Information

| | |
|--------------|--|
| Gene name | IL1B IL1F2 |
| Protein Name | Interleukin-1 beta (IL-1 beta) (Catabolin) |

| Organism | Gene ID | UniProt ID |
|----------|---------|------------|
| Human | 3553 | P01584 |
| Mouse | 16176 | P10749 |
| Rat | | Q63264 |

| | |
|-----------------------|---|
| Cellular Localization | Secreted |
| Tissue specificity | Expressed in activated monocytes/macrophages (at protein level) |

Validation Data



Various whole cell lysates were separated by 4-20% SDS-PAGE, and the membrane was blotted with anti-IL-1 beta antibody. The HRP conjugated Goat anti-Mouse IgG (H + L) antibody was used to detect the antibody. Lane 1: THP-1 Lane 2: THP-1 treated with TPA(80nM) overnight and then treated with LPS(1μ g/mL) for 1 hour Predicted band size: 31kDa Observed band size: 35,31,20kDa

For Research Use Only