

TRI63 Rabbit pAb (AR20065)

Key Features

Host Species:	Rabbit
Reactivity:	Human,Mouse,Rat
Applications:	WB,ELISA
Isotype:	IgG
MW:	38kD (Observed)

Recommended Dilution Ratios

WB:	1:500-2000
ELISA:	1:5000-20000

Storage

-15°C to -25°C/1 year (Do not lower than -25°C)

Basic Information

Clonality	Polyclonal
-----------	------------

Immunogen Information

Specificity	TRI63 Polyclonal Antibody detects endogenous levels of protein.
-------------	---

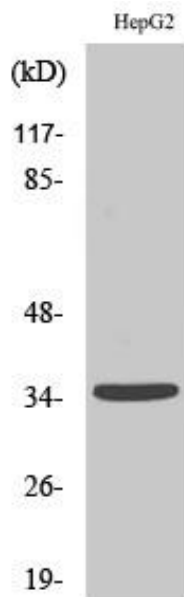
Target Information

Gene name	TRIM63 IRF MURF1 RNF28 SMRZ
Protein Name	E3 ubiquitin-protein ligase TRIM63 (Iris RING finger protein) (Muscle-specific RING finger protein 1) (MuRF-1) (MuRF1) (RING finger protein 28) (Striated muscle RING zinc finger protein) (Tripartite motif-containing protein 63)

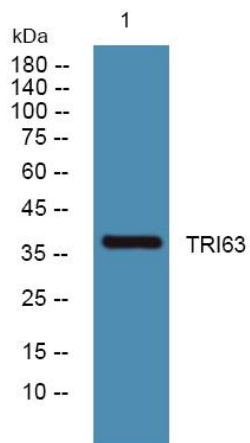
Organism	Gene ID	UniProt ID
Human	84676	Q969Q1
Mouse		Q38HM4
Rat		Q91Z63

Cellular Localization	Cytoplasm. Nucleus . Cytoplasm, myofibril, sarcomere, M line. Cytoplasm, myofibril, sarcomere, Z line. Colocalizes with TNNI3 in myocytes (By similarity). Localizes to the M and Z-lines in skeletal muscle. .
Tissue specificity	Muscle specific. Selectively expressed in heart and skeletal muscle. Also expressed in the iris

Validation Data



Western Blot analysis of various cells using TRIM63 Polyclonal Antibody diluted at 1:2000. Secondary antibody was diluted at 1:20000



Western blot analysis of lysates from SH-SY5Y cells, primary antibody was diluted at 1:1000, 4°over night

For Research Use Only