

Smad2 (Phospho Ser245) Rabbit pAb (AR20023)

Key Features

Host Species:	Rabbit
Reactivity:	Human,Mouse,Rat
Applications:	WB,ELISA,IHC
Isotype:	IgG
MW:	55kD (Observed)

Recommended Dilution Ratios

WB:	1: 500-2000
IHC:	1: 50-300
ELISA:	1: 2000-20000

Storage

-15°C to -25°C/1 year (Do not lower than -25°C)

Basic Information

Clonality	Polyclonal
-----------	------------

Immunogen Information

Specificity	This antibody detects endogenous levels of Human,Mouse,Rat Smad2 (Phospho Ser245).The name of modified sites may be influenced by many factors, such as species (the modified site was not originally found in human samples) and the change of protein sequence (the previous protein sequence is incomplete, and the protein sequence may be prolonged with the development of protein sequencing technology). When naming, we will use the "numbers" in historical reference to keep the sites consistent with the reports. The antibody binds to the following modification sequence (lowercase letters are modification sites):TGSPA
-------------	---

Target Information

Gene name	SMAD2 MADH2 MADR2
Protein Name	Smad2 (Phospho Ser245)

Organism	Gene ID	UniProt ID
Human	4087	Q15796
Mouse	17126	Q62432

Rat

29357

O70436

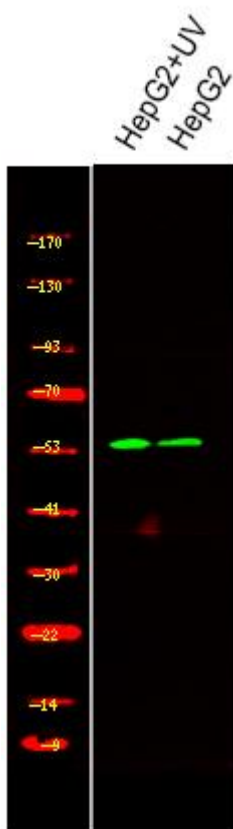
Cellular Localization

Cytoplasm . Nucleus . Cytoplasmic and nuclear in the absence of TGF-beta. On TGF-beta stimulation, migrates to the nucleus when complexed with SMAD4 (PubMed:9865696, PubMed:21145499). On dephosphorylation by phosphatase PPM1A, released from the SMAD2/SMAD4 complex, and exported out of the nucleus by interaction with RANBP1 (PubMed:16751101, PubMed:19289081). Localized mainly to the nucleus in the early stages of embryo development with expression becoming evident in the cytoplasm at the blastocyst and epiblast stages (By similarity).

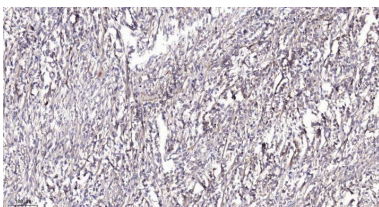
Tissue specificity

Expressed at high levels in skeletal muscle, endothelial cells, heart and placenta.

Validation Data



Western Blot analysis of various,using primary antibody at 1:1000 dilution. Secondary antibody was diluted at 1:10000



Immunohistochemical analysis of paraffin-embedded human Colon cancer. 1, Antibody was diluted at 1:200(4° overnight). 2, Tris-EDTA,pH9.0 was used for antigen retrieval. 3,Secondary antibody was diluted at 1:200(room temperature, 45min).

For Research Use Only