

FOXM1 (Phospho Thr600) Rabbit pAb (AR20064)

Key Features

Host Species:	Rabbit
Reactivity:	Human,Mouse,Rat
Applications:	WB
Isotype:	IgG
MW:	83kD (Observed)

Recommended Dilution Ratios

WB:	1:1000-2000
-----	-------------

Storage

-15°C to -25°C/1 year (Do not lower than -25°C)

Basic Information

Clonality	Polyclonal
-----------	------------

Immunogen Information

Specificity	This antibody detects endogenous levels of Human FoxM1 (phospho-Thr600)
-------------	---

Target Information

Gene name	FOXM1 FKHL16 HFH11 MPP2 WIN
-----------	-----------------------------

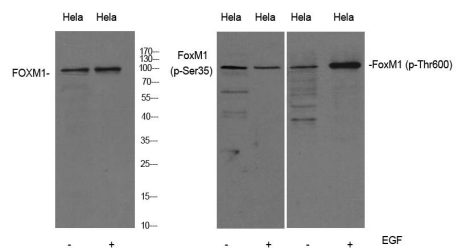
Protein Name	Forkhead box protein M1 (Thr600)
--------------	----------------------------------

Organism	Gene ID	UniProt ID
Human	2305	Q08050
Mouse		O08696
Rat		P97691

Cellular Localization	Nucleus.
-----------------------	----------

Tissue specificity	Expressed in thymus, testis, small intestine, colon followed by ovary. Appears to be expressed only in adult organs containing proliferating/cycling cells or in response to growth factors. Also expressed in epithelial cell lines derived from tumors. Not expressed in resting cells. Isoform 2 is highly expressed in testis.
--------------------	--

Validation Data



Western Blot analysis of mouse and rat brain lysis treated or untreated by EGF 20ng/ml 30'.. Primary Antibody was diluted at 1:1000. Secondary antibody was diluted at 1:10000

For Research Use Only