

## 53BP1 Rabbit mAb (AR1299)

### Key Features

Host Species:	Rabbit
Reactivity:	Human
Applications:	WB, IHC, IF, ELISA, CHIP, Cut&Tag
Isotype:	IgG,Kappa
MW:	214kD (Calculated) 450kD (Observed)

### Recommended Dilution Ratios

IHC:	1:200-1000
WB:	1:2000-10000
IF:	1:200-1000
ELISA:	1:5000-20000
CHIP:	1:50-100
Cut&Tag:	1:50-100

### Storage

-15°C to -25°C/1 year (Do not lower than -25°C)

### Basic Information

Clonality	Monoclonal
-----------	------------

### Immunogen Information

Specificity	Endogenous
-------------	------------

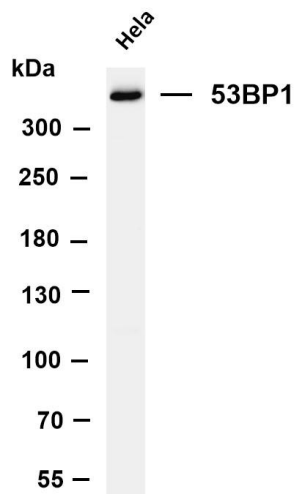
### Target Information

Gene name	TP53BP1
Protein Name	Tumor suppressor p53-binding protein 1

Organism	Gene ID	UniProt ID
Human	7158	Q12888
Mouse	27223	P70399

Cellular Localization	Nucleus
Tissue specificity	Cerebellum, Cervix, Epithelium, Myeloid leukemia cell, Skeletal muscle

## Validation Data



Various whole cell lysates were separated by 4-8% SDS-PAGE, and the membrane was blotted with anti-53BP1 antibody. The HRP-conjugated Goat anti-Rabbit IgG(H + L) antibody was used to detect the antibody.

Lane 1: HeLa

Predicted band size: 214kDa

Observed band size: 450kDa

Various whole cell lysates were separated by 4-20% SDS-PAGE, and the primary antibody was used at 4 °C, over night with a 1:5000 dilution . The Dylight 800-conjugated Goat anti-Rabbit antibody(Cat:RS23920) was used to detect the antibody.

Lane1: HeLa - Human cervical cancer

Lane2: HEK293 Human normal embryonic kidney

Lane3: HepG2 - Human hepatocellular carcinoma

Lane4: HCT-116 - Human colon cancer

Lane5: A549 - Human lung

adenocarcinoma

Lane6: A431 - Human skin squamous cell carcinoma

Lane7: K562 - Human chronic myeloid leukemia

Lane8: Jurkat - Human acute T cell leukemia cells

Lane9: MCF7 - Human breast cancer

Lane10: SH-SY5Y Human neuroblastoma cells

Lane11: NIH-3T3 - NIH mouse fibroblasts

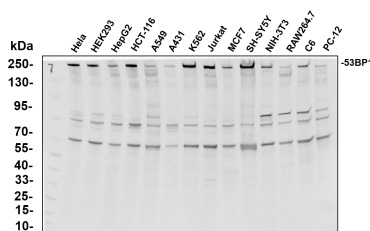
Lane12: RAW264.7 - Mouse mononuclear macrophage leukemia cells

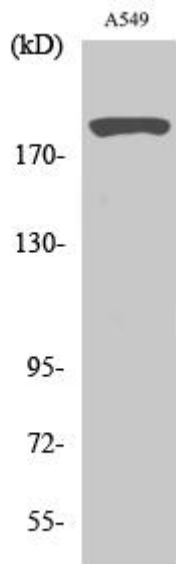
Lane13: C6 - Rat glioma cells

Lane14: PC-12 - Pheochromocytoma in rats

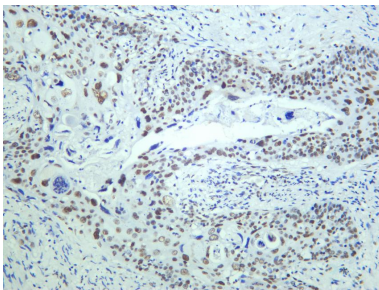
Predicted band size: 450kDa

Observed band size: 214kDa

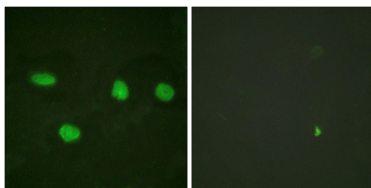




Western Blot analysis of various cells using 53BP1 Antibody diluted at 1:2000



Human colon carcinoma was stained with anti-53BP1 Rabbit antibody



Immunofluorescence analysis of HeLa cells, using 53BP1 Antibody. The picture on the right is blocked with the synthesized peptide.

For Research Use Only