

cGAS Rabbit mAb (AR1608)

Key Features

Host Species:	Rabbit
Reactivity:	Human
Applications:	WB,IHC,IF,ELISA
Isotype:	IgG,Kappa
MW:	59 kD (Calculated) 65 kD (Observed)

Recommended Dilution Ratios

IHC:	1:100-500
WB:	1:1000-5000
IF:	1:200-1000
ELISA:	1:5000-20000

Storage

-15°C to -25°C/1 year (Do not lower than -25°C)

Basic Information

Clonality	Monoclonal
-----------	------------

Immunogen Information

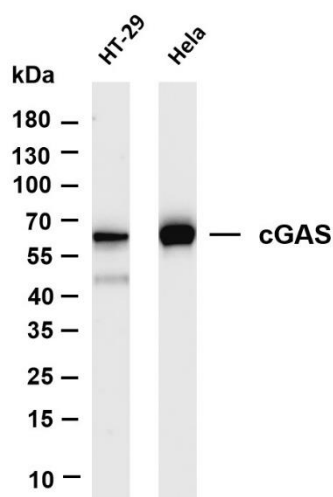
Specificity	Endogenous
-------------	------------

Target Information

Gene name	MB21D1 cGAS C6orf150
Protein Name	M21D1

	Organism	Gene ID	UniProt ID
	Human	115004	Q8N884
Cellular Localization	Cytoplasm, Membrane		
Tissue specificity	Expressed in the monocytic cell line THP1.		

Validation Data



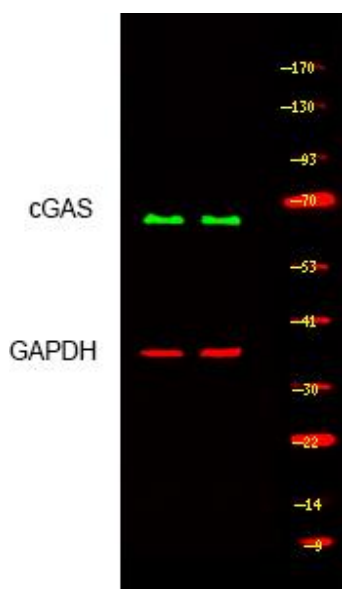
Various whole cell lysates were separated by 4-20% SDS-PAGE, and the membrane was blotted with anti-cGAS antibody. The HRP-conjugated Goat anti-Rabbit IgG(H + L) antibody was used to detect the antibody.

Lane 1: HT-29

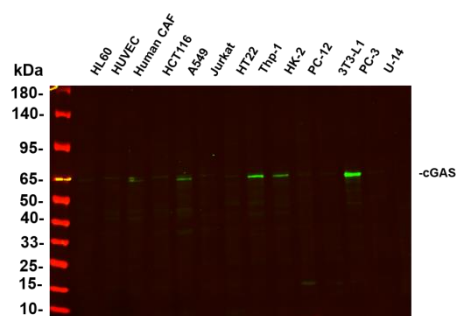
Lane 2: HeLa

Predicted band size: 59kDa

Observed band size: 65kDa



Western blot analysis of lysates from MCF-7 and THP1 cells, primary antibody was diluted at 1:1000, 4°C overnight.



Various whole cell lysates were separated by 4-20% SDS-PAGE, and the primary antibody was used at 4°C, over night with a 1:2500 dilution. The Dylight 800-conjugated Goat anti-Rabbit antibody was used to detect the antibody.

Lane1: HL60 - Human promyelocytic leukemia cell

Lane2: HUVEC - Human umbilical vein endothelial cell

Lane3: Human CAF Human cancer-associated fibroblast

Lane4: HCT116 - Human colorectal carcinoma

Lane5: A549 - Human lung carcinoma

Lane6: Jurkat - Human T lymphocyte leukemia

Lane7: HT22 - Mouse hippocampal neuronal

Lane8: Thp-1 - Human monocytic leukemia

Lane9: HK-2 - Human proximal tubular epithelial

Lane10: PC-12 - Rat adrenal pheochromocytoma

Lane11: 3T3-L1 Mouse embryonic fibroblast

Lane12: PC-3 - Human prostate adenocarcinoma

Lane13: U-14 - Mouse cervical carcinoma

Lane14: 293F - HEK293 derivative, adapted for suspension culture

Predicted band size: 59kDa

Observed band size: 65kDa

For Research Use Only