

## p53 Rabbit pAb (AR20051)

### Key Features

Host Species:	Rabbit
Reactivity:	Human,Mouse,Rat,Monkey
Applications:	WB,IHC,IF,ELISA
Isotype:	IgG
MW:	53kD (Observed)

### Recommended Dilution Ratios

WB:	1:500-2000
IHC:	1:100-1:300
IF:	1:200-1000
ELISA:	1:10000
Not yet tested in other applications.	

### Storage

-15°C to -25°C/1 year (Do not lower than -25°C)

### Basic Information

Clonality	Polyclonal
-----------	------------

### Immunogen Information

Specificity	p53 Polyclonal Antibody detects endogenous levels of p53 protein.
-------------	---

### Target Information

Gene name	TP53 P53 Antigen NY-CO-13;BCC7;Cellular tumor antigen p53;FLJ92943;LFS1;Mutant tumor protein 53;p53;p53 tumor suppressor;P53_HUMAN;Phosphoprotein p53;Tp53;Transformation related protein 53;TRP53;tumor antigen p55;Tumor protein 53;Tumor protein p53;Tumor suppressor p53
Protein Name	

Organism	Gene ID	UniProt ID
Human	7157	P04637
Mouse	22059	P02340
Rat	24842	P10361

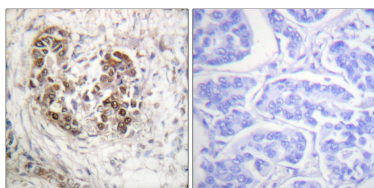
## Cellular Localization

## Nuclear

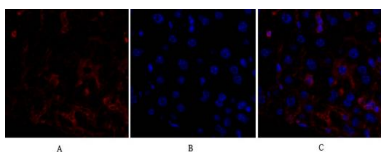
## Tissue specificity

Ubiquitous. Isoforms are expressed in a wide range of normal tissues but in a tissue-dependent manner. Isoform 2 is expressed in most normal tissues but is not detected in brain, lung, prostate, muscle, fetal brain, spinal cord and fetal liver. Isoform 3 is expressed in most normal tissues but is not detected in lung, spleen, testis, fetal brain, spinal cord and fetal liver. Isoform 7 is expressed in most normal tissues but is not detected in prostate, uterus, skeletal muscle and breast. Isoform 8 is detected only in colon, bone marrow, testis, fetal brain and intestine. Isoform 9 is expressed in most normal tissues but is not detected in brain, heart, lung, fetal liver, salivary gland, breast or intestine.

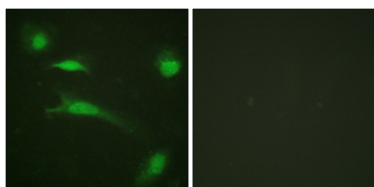
## Validation Data



Immunohistochemistry analysis of paraffin-embedded human breast carcinoma tissue, using p53 Antibody. The picture on the right is blocked with the synthesized peptide.



Immunofluorescence analysis of mouse-liver tissue. 1, p53 Polyclonal Antibody (red) was diluted at 1:200 (4°C, overnight). 2, Cy3 labeled Secondary antibody was diluted at 1:300 (room temperature, 50 min). 3, Picture B: DAPI (blue) 10 min. Picture A: Target. Picture B: DAPI. Picture C: merge of A+B



Immunofluorescence analysis of HeLa cells, using p53 Antibody. The picture on the right is blocked with the synthesized peptide

For Research Use Only