

Parvalbumin Rabbit mAb (AR1374)

Key Features

Host Species:	Rabbit
Reactivity:	Human, Mouse, Rat
Applications:	WB, IHC, IF, IP, ELISA
Isotype:	IgG, Kappa
MW:	12kD (Calculated) 12kD (Observed)

Recommended Dilution Ratios

IHC:	1:200-1000
WB:	1:2000-10000
IF:	1:200-1000
ELISA:	1:5000-20000
IP:	1:50-200

Storage

-15°C to -25°C/1 year (Do not lower than -25°C)

Basic Information

Clonality	Monoclonal
-----------	------------

Immunogen Information

Specificity	Endogenous
-------------	------------

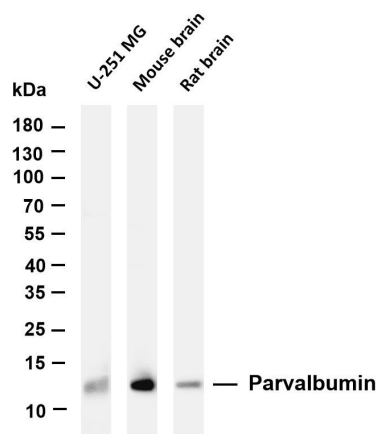
Target Information

Gene name	PVALB
Protein Name	Parvalbumin alpha

Organism	Gene ID	UniProt ID
Human	5816	P20472
Mouse		P32848
Rat		P02625

Cellular Localization	Cytoplasm
Tissue specificity	Cerebellum

Validation Data



Various whole cell lysates were separated by 4-20% SDS-PAGE, and the membrane was blotted with anti-Parvalbumin antibody. The HRP-conjugated Goat anti-Rabbit IgG(H + L) antibody was used to detect the antibody.

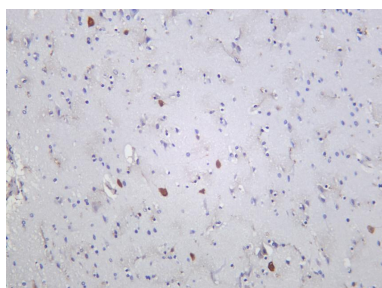
Lane 1: U-251 MG

Lane 2: Mouse brain

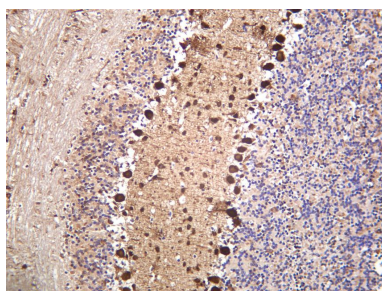
Lane 3: Rat brain

Predicted band size: 12kDa

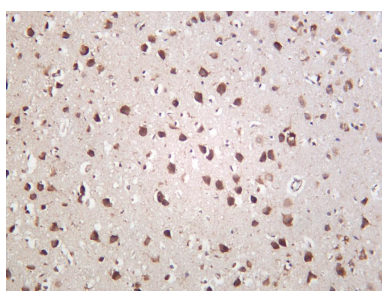
Observed band size: 12kDa



Human brain was stained with anti-Parvalbumin rabbit antibody



Mouse brain was stained with anti-Parvalbumin rabbit antibody



Rat brain was stained with anti-Parvalbumin rabbit antibody

For Research Use Only