

IRS-1 (Phospho Ser302) Rabbit pAb (AR20063)

Key Features

Host Species:	Rabbit
Reactivity:	Human,Mouse
Applications:	WB,IHC
Isotype:	IgG
MW:	170kD (Observed)

Recommended Dilution Ratios

WB:	1:500-2000
IHC:	1:50-300

Storage

-15°C to -25°C/1 year (Do not lower than -25°C)

Basic Information

Clonality	Polyclonal
-----------	------------

Immunogen Information

Specificity	This antibody detects endogenous levels of Human Mouse IRS-1 (phospho-Ser302)
-------------	---

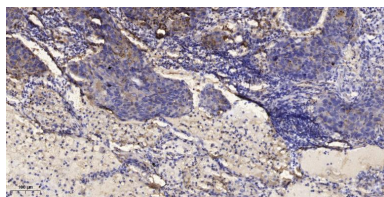
Target Information

Gene name	IRS1
Protein Name	IRS-1 (Ser302)

Organism	Gene ID	UniProt ID
Human	3667	P35568
Mouse	16367	P35569
Rat	25467	P35570

Cellular Localization	nucleus,cytoplasm,cytosol,plasma membrane,insulin receptor complex,caveola,intracellular membrane-bounded organelle
Tissue specificity	Epithelium,Eye,Skeletal muscle

Validation Data



Immunohistochemical analysis of paraffin-embedded human Squamous cell carcinoma of lung. 1, Antibody was diluted at 1:200(4° overnight). 2, TrisEDTA,pH9.0 was used for antigen retrieval. 3,Secondary antibody was diluted at 1:200(room temperature, 45min).

For Research Use Only