

Prestained Protein Marker(10-250kDa)

【产品货号/Catalog】 PPM2-01/ PPM2-02/ PPM2-10

【产品名称/Name】

- 1、通用名称：彩色预染蛋白 Marker(10-250kDa)
- 2、Name: Prestained Protein Marker (10-250 kDa)

【产品介绍】 彩色预染蛋白 Marker (10-250kDa) 是一种即用型试剂, 使用前无需煮沸, 含有10种覆盖广泛分子量 (10~250kDa) 的预染色蛋白质, 包括70kDa 的**橙色**参考带和25kDa 的**红色**参考带。可用于在 SDS-PAGE 中监测蛋白质分离、验证蛋白质印迹转移 (PVDF、尼龙或硝化纤维素膜) 以及蛋白质的近似大小。

The 3-color Prestained Protein Marker Marker is a ready to use three-color protein standard with 11 pre-stained proteins covering a wide range of molecular weights from 10 to 250 kDa (10 to 230 kDa in Bis-Tris /MOPS buffer). Proteins are covalently coupled with a blue chromophore except for two reference bands (one **red** at 25 kDa and one **red** band at 70 kDa respectively) when separated on SDS-PAGE (Tris-Glycine buffer). The Protein Marker is designed for monitoring protein separation during SDS-polyacrylamide gel electro-phoresis, verification of Western transfer efficiency on membranes, (PVDF, nylon, or nitrocellulose) and for approximating the size of proteins.

【包装规格Size】 250 μ L*1 tubes/ 250 μ L *2 tubes/ 250 μ L *10 tubes

【储存条件Storage】 2-8 $^{\circ}$ C for 3 months, -30 to-15 $^{\circ}$ C for at least 2 years

【使用说明】

- 1、Western Blot: 3-5 μ L/land;
- 2、SDS-PAGE: 1-2 μ L/land (15 lands gel) ; 2-3 μ L/land (10 lands gel) 。

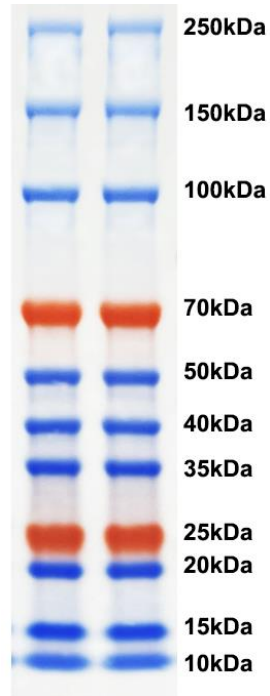
【注意事项】

1. 产品已预混 loading buffer, **不需要加热、稀释或添加还原剂。**

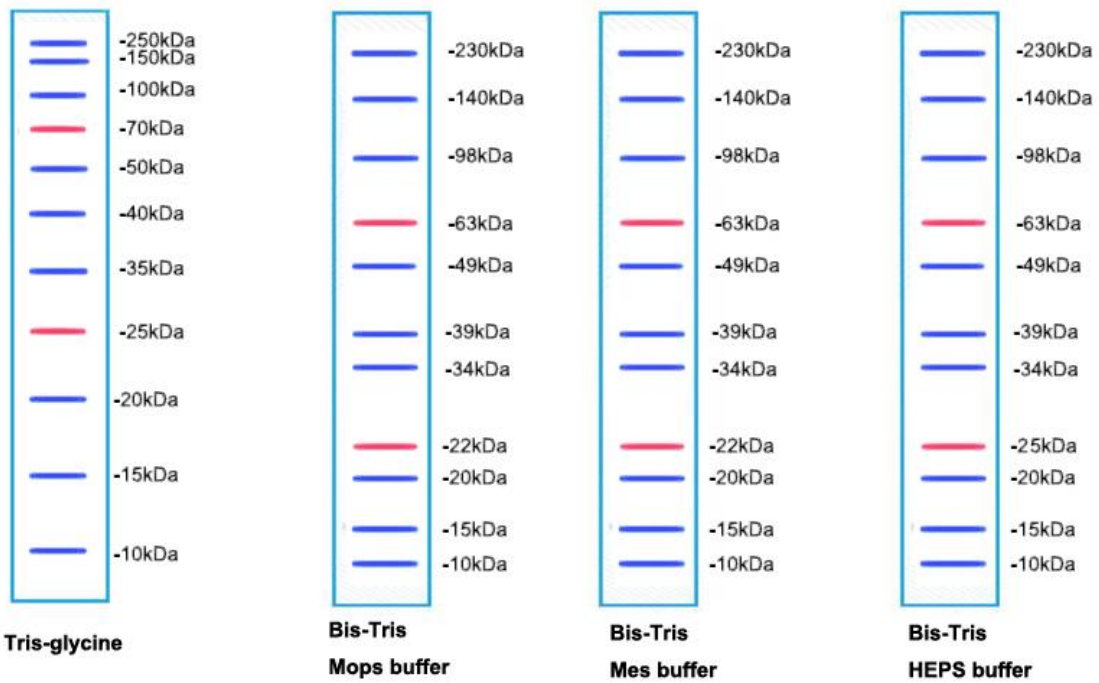
The marker is supplied in gel loading buffer and is ready to use. Do NOT heat, dilute, or add reducing agents before loading.

2. 加样前在室温放置数分钟, 解冻后, 轻轻摇匀, 以确保溶液混合均匀。

Let it stand at room temperature for a few minutes before using, shake it gently to ensure that the solution is mixed evenly.



Tris-glycine 电泳体系示意图，每孔4微升上样



蛋白marker 在不同电泳缓冲体系中的迁移示意图

For Research Use Only