

Actin, smooth muscle (SMA) (ABT-SMA) Mouse mAb (AM10013)

Key Features

Host Species:	Mouse
Reactivity:	Human,Mouse,Rat
Applications:	IHC,WB,IF,ELISA
Isotype:	IgG2a,Kappa
MW:	42kD (Observed)

Recommended Dilution Ratios

WB:	1:500-2000
IHC:	1:200-1000
IF:	1:100-500
ELISA:	1:1000-5000

Storage

-15°C to -25°C/1 year (Do not lower than -25°C)

Basic Information

Clonality	Monoclonal
-----------	------------

Immunogen Information

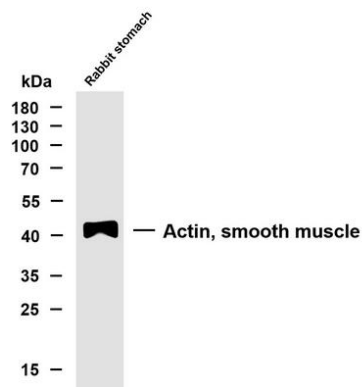
Specificity	The antibody can specifically recognize smooth muscle actin and shows no reaction with actin of skeletal muscle or cardiac muscle.
-------------	--

Target Information

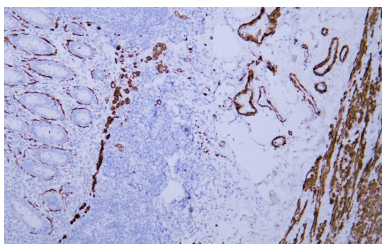
Gene name	ACTA2/ACTG2
Protein Name	Actin, smooth muscle

	Organism	Gene ID	UniProt ID
	Human		P62736; P63267
Cellular Localization	Cytoplasmic		
Tissue specificity	Pituitary,Uterus		

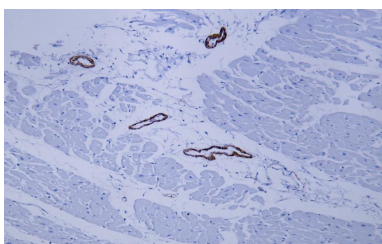
Validation Data



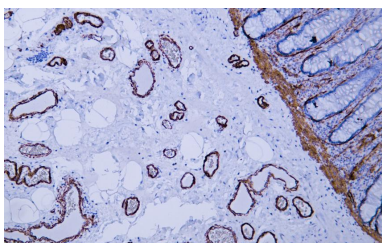
Whole cell lysates were separated by 10% SDS-PAGE, and the membrane was blotted with anti-Actin, smooth muscle (ABT-SMA) antibody. The HRP conjugated Goat anti-Mouse IgG(H + L) antibody was used to detect the antibody. Lane 1: Rabbit stomach



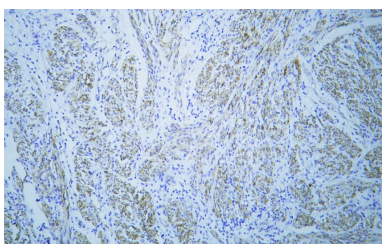
Human appendix tissue was stained with anti-SMA(ABT-SMA) antibody.



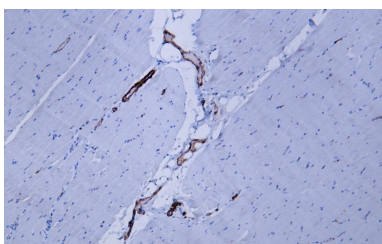
Human cardiac muscle tissue was stained with anti-SMA(ABT-SMA) antibody.



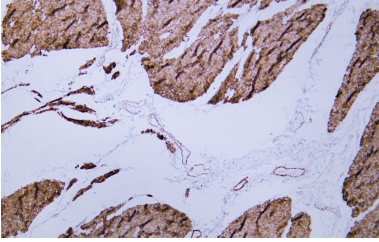
Human colon tissue was stained with anti-SMA(ABT-SMA) antibody



Human leiomyoma tissue was stained with anti-SMA(ABT-SMA) antibody



Human skeletal muscle tissue was stained with anti-SMA(ABT-SMA) antibody



Human smooth muscle tissue was stained with anti-SMA(ABT-SMA) antibody

For Research Use Only