

α smooth muscle actin (1E12) Mouse mAb (AM10012)

Key Features

Host Species:	Mouse
Reactivity:	Human,Mouse,Rat
Applications:	WB,IHC
MW:	42kD (Observed)

Recommended Dilution Ratios

WB:	1:5000-50000
IHC:	1:1000-2000

Storage

-15°C to -25°C/1 year (Do not lower than -25°C)

Basic Information

Clonality	Monoclonal
-----------	------------

Immunogen Information

Specificity	The antibody detects endogenous α-SMA protein.
-------------	------------------------------------------------

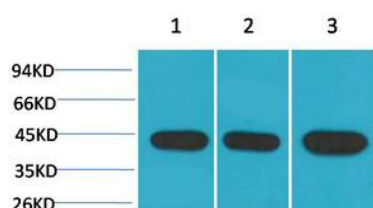
Target Information

Gene name	ACTA2
Protein Name	Actin, aortic smooth muscle

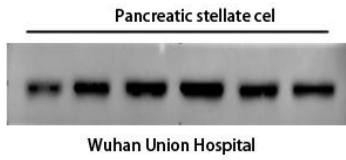
Organism	Gene ID	UniProt ID
Human	59	P62736
Mouse	11475	P62737
Rat	81633	P62738

Cellular Localization	Cytoplasm, cytoskeleton
Tissue specificity	Pituitary,Uterus

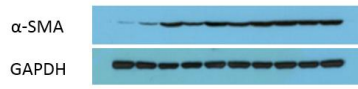
Validation Data



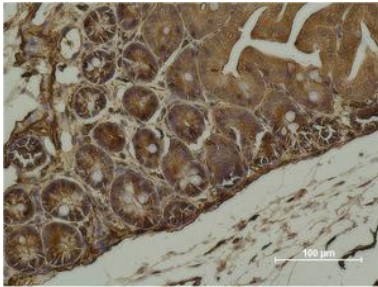
Western blot analysis of 1) Hela, 2) 3T3, 3) Rat Brain using α-SMA Monoclonal Antibody.



The picture was kindly provided by our customer



The picture was kindly provided by our customer. Primary antibody was diluted at 1:5000. Loading control antibody was diluted at 1:20000



Immunohistochemical analysis of paraffin-embedded Mouse Cecal Tissue using α -SMA Monoclonal Antibody

For Research Use Only