

IRS-1 (Phospho Tyr896) Rabbit pAb (AR20062)

Key Features

Host Species:	Rabbit
Reactivity:	Human,Mouse,Rat
Applications:	WB,IHC
Isotype:	IgG
MW:	170kD (Observed)

Recommended Dilution Ratios

WB:	1:500-2000
IHC:	1:50-300

Storage

-15°C to -25°C/1 year (Do not lower than -25°C)

Basic Information

Clonality	Polyclonal
-----------	------------

Immunogen Information

Specificity	Phospho-IRS-1 (Y896) Polyclonal Antibody detects endogenous levels of IRS-1 protein only when phosphorylated at Y896.The name of modified sites may be influenced by many factors, such as species (the modified site was not originally found in human samples) and the change of protein sequence (the previous protein sequence is incomplete, and the protein sequence may be prolonged with the development of protein sequencing technology). When naming, we will use the "numbers" in historical reference to keep the sites consistent with the reports. The antibody binds to the following modification sequence (lowercase letters are modification sites):GEyVN
-------------	--

Target Information

Gene name	IRS1
Protein Name	Insulin receptor substrate 1

Organism	Gene ID	UniProt ID
Human	3667	P35568
Mouse	16367	P35569

Rat

25467

P35570

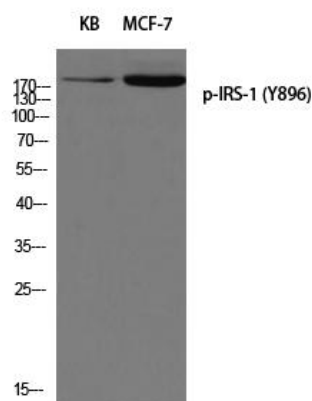
Cellular Localization

nucleus,cytoplasm,cytosol,plasma membrane,insulin receptor complex,caveola,intracellular membrane-bounded organelle

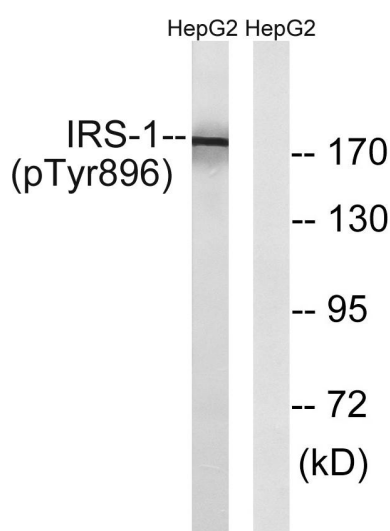
Tissue specificity

Epithelium, Eye, Skeletal muscle

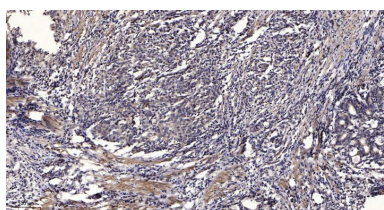
Validation Data



Western blot analysis of KB MCF-7 using p-IRS-1 (Y896) antibody. Antibody was diluted at 1:500



Western blot analysis of lysates from HepG2 cells treated with Na3VO4 0.3mM 40', using IRS-1 (Phospho-Tyr896) Antibody. The lane on the right is blocked with the phospho peptide



Immunohistochemical analysis of paraffin-embedded human Gastric adenocarcinoma. 1, Antibody was diluted at 1:200(4° overnight). 2, Tris EDTA,pH9.0 was used for antigen retrieval. 3,Secondary antibody was diluted at 1:200(room temperature, 45min).

For Research Use Only